



PGCC Family Resource 2024-2025 Booklet

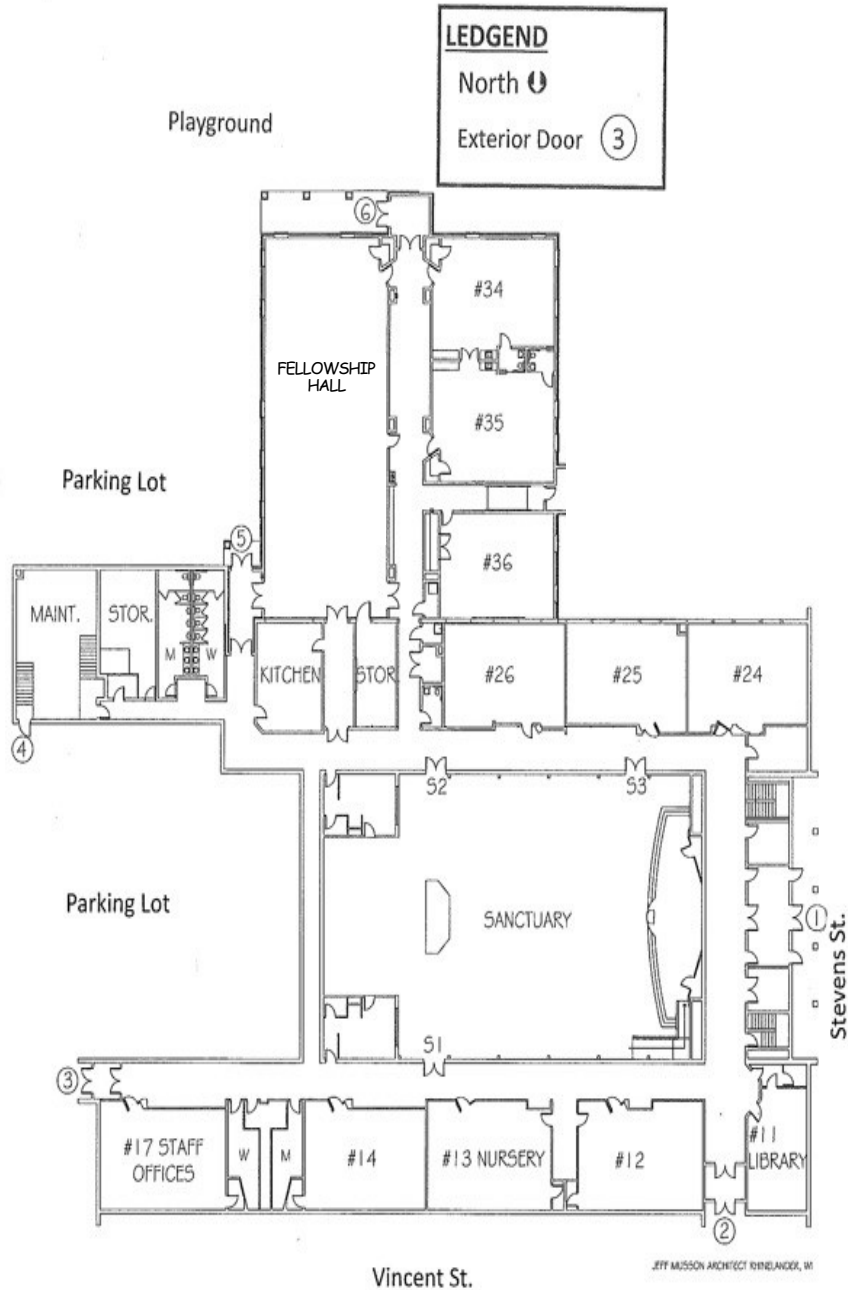


Table of Contents

2024-2025 List of Special Dates	1
Welcome to Awana	2
Awana Clubs by Age Groups	3
Directors' Contact Information	3
PGCC Website and Calendar Information	3
Registration and Attendance	4
Inclement Weather Policy..	5
All About Cubbies Club	5-6
• Meeting Times	5
• Sign-In/Drop-Off and Sign-Out/Pick-Up	5
• Handbook Helps for Home	5
• Snack/Craft/Game Time	6
• "Cubbie of the Day"	6
All About Sparks and T&T Clubs	7-8
• Meeting Time and Sign-In/Sign Out Areas.	7
• Game Time	7
• Handbook Time	7
• Large Group Time	8
• Incentives	8
• How it Works	8
• Helpful Hints	9
Looking for More Information about Awana?	9
An Invitation from PGCC	10
Floor Plan of PGCC	11

Our Awana Clubs Meet Wednesdays from 6:30-8:15pm

The clubs follow the Rhinelander K-12 Public School District calendar. **PGCC Awana does not meet when the Rhinelander School District classes are not scheduled or if school or after school activities are canceled.**

Calendar of Special Dates (subject to change)

You will receive an email the week before the upcoming Special Night with more details. Normally, the first Wednesday of the month is a *free church meal for everyone* at 5:30. The Awana Share Store is normally open on the first Wednesday, also.

2024

- SEPT 11 Fall Kick-Off Event for registration
- SEPT 18 1st Regular Club Night, PGCC Weds. start
- SEPT 25 Bring a Friend / Wear Your Club Color Night
- OCT 30 **Missions Night:** Cowboy Truth -
Dress like Cowboys & Cowgirls
- NOV 20 Thanksgiving Theme - Dress like Pilgrims & Turkeys
Bring a canned good for the Food Pantry
- NOV 27 **NO CLUB** - Happy Thanksgiving!
- DEC 18 **NO CLUB** - Christmas Break
- DEC 25 **NO CLUB** - Merry Christmas!

2025

- JAN 1 **NO CLUB** - Happy New Year!
- JAN 8 Monthly Meal & Awana (No Share Store)
- JAN 15 Crazy Hair Night
- JAN 22 Grand Prix cars available for purchase until G.P.
- FEB 15 (Sat.) Grand Prix Workshop, 9-Noon
- FEB 19 Backwards/Inside Out Night
- FEB 26 **Awana Grand Prix**
- MAR 12 Dress in Neon Night
- MAR 19 **NO CLUB** - Spring Break
- APR 16 Wear Your Crazy Hat Night
- APR 30 Last Regular Awana & Share Store
- MAY 1 Awards Night and Monthly Meal

Please Note: Cost should not keep *any* child from participating. Please see any Club Director for lightly used items, making payments, and for scholarships to help defray your costs.



**We invite you and your family to
join us for our Worship Service!**

SUNDAY MORNINGS

8:45—9:30 am Sunday School
(starts in the fall, check website for dates)

10:00 am Worship Service
(Childcare available for those age 3 & under)

Please call the church at 715.369.5404 with any questions or visit our website at www.pgcc.us for information about what we believe, upcoming events, watch or listen to current and past series, and learn about the other ministries that we offer.

Our YOUTH GROUP is for Grades 5/6-12

Meets 6:30-8:30 pm Wednesdays when Awana meets

PGCC and Awana Staff:

- | | |
|-------------------------------------|------------------------------|
| Senior Pastor | Jeremy Vander Galien |
| Assoc Pastor of Congregational Life | Jeff O'Malley |
| Associate Pastor of Worship | Marc White |
| Office Assistants | Terri Hansen
Stevana Segó |
| Awana Commander | Jeremy Vander Galien |
| Cubbies Director | Deb Franks |
| Sparks Director | Amber Scholten |
| T & T Directors | Joel Drabek, Clare Braband |
| Awana Secretary | Rachel Fugle |

- The handbooks are designed to be finished in one school year if the clubber recites at least 2-3 sections per week.
- Please work with your child and do your best to explain the meaning of each verse. Children will memorize more quickly if they understands what they are memorizing.
- Audio songs for the OT and NT books of the Bible are at pinegove-wi.com/awana
- A book bag may help avoid frantic, last minute searches for the handbook and Bible. Awana bags are available for purchase through PGCC. (See order form).

Looking for More Information about Awana?

Check out the information at:
www.pinegrove-wi.com/awana

We have a complete calendar and registration form for the year and many resources for parents and clubbers.



**Like us on Facebook, type in
 PGCC Awana**



WELCOME TO AWANA
 at Pine Grove Community Church

What is Awana?



Awana stands for: Approved Workmen
Are Not Ashamed (from 2 Timothy 2:15)

AWANA is an international ministry program that gives children 3 years old – 5/6 grade (divided into three age-appropriate clubs) an opportunity to know, love, and serve Jesus no matter their background. We are Awana Club #4756.

Why Kids and Parents Love Awana!

Why do so many kids attend Awana clubs at Pine Grove Community Church every week? Awana is fun! And of course, they're learning and growing in Christ, too!

Awana Club weekly meetings are brimming with life-enriching experiences! Trained leaders guide children through age-appropriate material. Clubbers learn that God is real, that He loves them, and that He has expressed that love through Jesus Christ. They also learn how to apply the truths of the Bible to their daily lives because the program is distinctively Christian and Bible-centered.

Note: Parents/guardians are invited to visit and observe at any time. Feel free to contact Pastor Jeremy Vander Galien or any Director with questions.

VESTS, T-SHIRTS, & DUES

Cubbies and Sparks are encouraged to wear an Awana vest as a great way to display the awards they have earned for memorizing Bible verses. T & T clubbers are encouraged to wear a PGCC Awana T-shirt. Both are purchased through PGCC Awana.

We are once again asking parents to pay dues to help defray some of the costs (\$10 for one child or \$20 per family).

3 different Awana clubs at Pine Grove geared for the needs of your child's age/grade:



Cubbies: PreK (2 years prior to entering Kindergarten 5K). Children must be age 3 by Sept. 1st and potty-trained. The Cubbies Director is Deb Franks.



Sparks: Kindergarten (K5) - Grade 2
Bible memorization and Bible-centered activities are emphasized. The Sparks Director is Amber Scholten.



Truth and Training (T&T): Grades 3 - 5/6
Bible memorization and Bible-centered activities are emphasized. T & T Directors are Joel Drabek & Clare Braband.

Directors' Contact Information

Pastor/Commander:	Jeremy Vander Galien	715.369.5404
Cubbies Director:	Deb Franks	715.282.6227
Sparks Director:	Amber Scholten	608.553.2814
T & T Directors:	Joel Drabek	715.360.3442
	Clare Braband	262.719.4009

Our church website is www.pgcc.us

For a calendar of all PGCC church events, go to our website and click on the calendar icon.

For more information on Awana, go to www.pinegrove-wi.com/awana. You can see the Awana calendar, this handbook, the registration form, and hear the songs for the Old and New Testament books of the Bible.

Sparks and T&T Large Group Time

Large Group Time includes a time of worship through songs, club announcements, and a Bible lesson with real-life application. Incentives, theme nights, and special guests add to the excitement of coming to Awana.



Incentive for Sparks and T&T

Clubbers each receive "Awana Shares" for completing units of their handbooks, memorizing Bible verses, wearing their vest/shirt, bringing their handbook and Bible, and for team color efforts. Shares may be spent periodically at the Awana Share Store, normally open the first Wednesday of the month. In addition, Sparks will receive either a patch or a jewel for their vest once a unit is completed.

How it Works

- Each new Spark and T&T clubber receives a free entrance booklet to complete (see below).
- Then, clubbers may purchase a handbook. Please see order form or check with the Awana Secretary or Director if unsure which handbook your clubber needs.

How to progress through the booklet and handbooks:

1. Both consist of units that are completed when the requirements of each of the smaller "sections" are met.
2. Each clubber shows his/her work and recites the verses to his/her leader who then signs-off in the designated areas.
3. Parents may not sign-off on their own child's sections, but it is helpful for parents to indicate where they believe that their clubber is ready to present to his/her leader.
4. When all the sections of a unit are passed by the leader, the clubber takes his/her book to the "Check-In" desk (Awana Secretary) to have the unit recorded and to receive shares and rewards. At year end, clubbers receive awards for completing handbooks.

Both Sparks and T & T clubs have similar formats but occur separately with their own club activities.



Sign-In for Spark and T&T clubs opens at 6:20 pm in the hallway just outside of Sanctuary door S-2. Then, your clubber can join his/her leaders in the Sanctuary.

Both these clubs start at **6:30pm** in the Sanctuary. They will then be dismissed to their individual clubs.

At the end of the evening, both clubs gather in the Fellowship Hall. Pick-Up is at 8:15 pm. Sign-Out will be in the Fellowship Hall, too.



Sparks and T&T

Sign-In.....outside Sanctuary, door S-2 (6:20pm)

Drop-Off.....in Sanctuary following Sign-In.

Sign-Out/Pick-Up.....in the Fellowship Hall (8:15pm)

Sparks and T&T Game Time

Playing a variety of unique games involves all of the clubbers in fun, fast activity as part of a team. Games are age-appropriate and designed for varying physical abilities. Adult/Teen team leaders encourage organization, enthusiasm, and good sportsmanship. Please have your child dress casually and wear appropriate shoes for running games.

Sparks and T&T Handbook Time

Each clubber will be given an entrance book (Flight 3:16 for Sparks and Start Zone for T&T). When completed, each clubber may purchase a handbook. At home, the clubbers and their family do the activities and review the Bible verses. The clubbers then show their work and recite their verses to their leaders on club night.

Leaders guide a small group of clubbers through their books during Handbook Time. Emphasis is placed on helping clubbers achieve Bible memorization, understanding, and application of the Biblical truth presented.

Family Registration Information:

Please complete the Children's/Youth Ministry Family Registration Form. Only **one** form per family is needed. Providing your email address is important in order to receive timely information.

Sign-In/Out & Drop-Off/Pick-Up For All Children:

- Sign-In opens at 6:20 pm then clubbers are taken to their leaders. Sign-Out is at 8:15 pm. (The specific locations are listed in the individual club information sections.)
- All children **must be** signed in and out each club night by a parent/guardian.
- All children must be picked up **inside** the facility for safety reasons. Further, no child will be allowed to meet his/her parent/guardian outside of the pick-up location.
- **Children will be released only to the parents, guardians, or individuals listed on the registration form.** *see below*
- If you need someone else to transport your child on a non-regular basis, please provide written permission to your child's club Director or the Awana Secretary. In addition, please notify your designee to make contact with your clubber's Director or the Awana Secretary before signing out your child.
- **If an emergency arises**, please make arrangements by contacting Pastor Jeremy at the church office at 715.369.5404 or your club Director. (See Contact Info on Page 3).

What About Illness?

Please keep your child home if he/she missed school due to illness or is showing signs of illness.



- Whenever the Rhinelander K-12 Public School District cancels school or after school activities or dismisses early due to weather, PGCC Awana is also canceled.
- Club may be canceled if weather conditions are considered unsafe for travel. Every effort will be made to contact each family as soon as possible. Email is used for this purpose as well as posting on Facebook,

If you have questions regarding whether Club will be meeting or not, call the Church Office at 715.369.5404 by 4:00 pm or see our Awana Facebook page.

All About Cubbies Club



Cubbies club is designed for Preschool aged children to join the Cubbie fun from **6:30-8:15pm** in **Classroom #35**, located across the hallway from the Fellowship Hall (multipurpose room).

Sign-In/Drop-Off & Sign-Out/Pick-Up

Please sign your child in and out at the table located just outside the door to Classroom #35. Sign-In opens at 6:20 pm and your Cubbie may join in a group activity until Lesson Time. Sign-Out/Pick-Up is at 8:15 pm.

Handbook Helps for Home

Focus on helping your child understand the meaning of the Bible verses in simple terms. Most of the weekly “Memory Seeds” (Bible verse) have two choices - you choose the one most suited for your child’s ability. Please sign and date your child’s book. “Under the Apple Tree” are extra optional activities in the Handbook.

Cubbies Snack & Craft Time and Game Time

The night would not be complete without a snack, craft, and games. The snack is provided by the “Cubbie of the Day” followed by a craft that compliments the Bible lesson.

Clubbers rotate to non-competitive games designed for energetic Cubbies. ***For your child’s safety, please do not send your Cubbie in loose footwear or girls in long dresses.***

“Cubbie of the Day”

Each clubber has an opportunity to be the “Cubbie of the Day” near his/her birthday whenever possible. He/she brings a treat to share at Snack Time and receives a small gift from Cubbie Bear. You will receive a reminder note with your child’s date and the number of treats needed. **(Suggestion: non-messy treats - fruit snacks, cookies, granola bars, cut-up fruit. No peanuts due to allergies.)**

Parents/Guardians Are VERY Important!

Parenting young children comes with challenges and rewards. We are grateful to know of any event shaping your child’s life as it helps us help your Cubbie have a successful evening. Please know that we are available to help and provide you with practical resources, also.

As a parent, you can help your child be excited about learning God’s Word. When they pass certain markers, they receive a patch that you can iron onto his/her vest. The Cubbie leader will share more information on how you can help.

CUBBIES SONG

***We are Awana Cubbies, we’re happy all day long.
We know that Jesus loves us! That’s why we sing this song.
We hop because we’re happy, and we jump and shout for joy.
For Jesus is a friend to us. He loves each girl and boy.***

To hear the tune, go to “awanaplus.com/appleseed.
Scroll down to “Handbook Music (ESV)”